

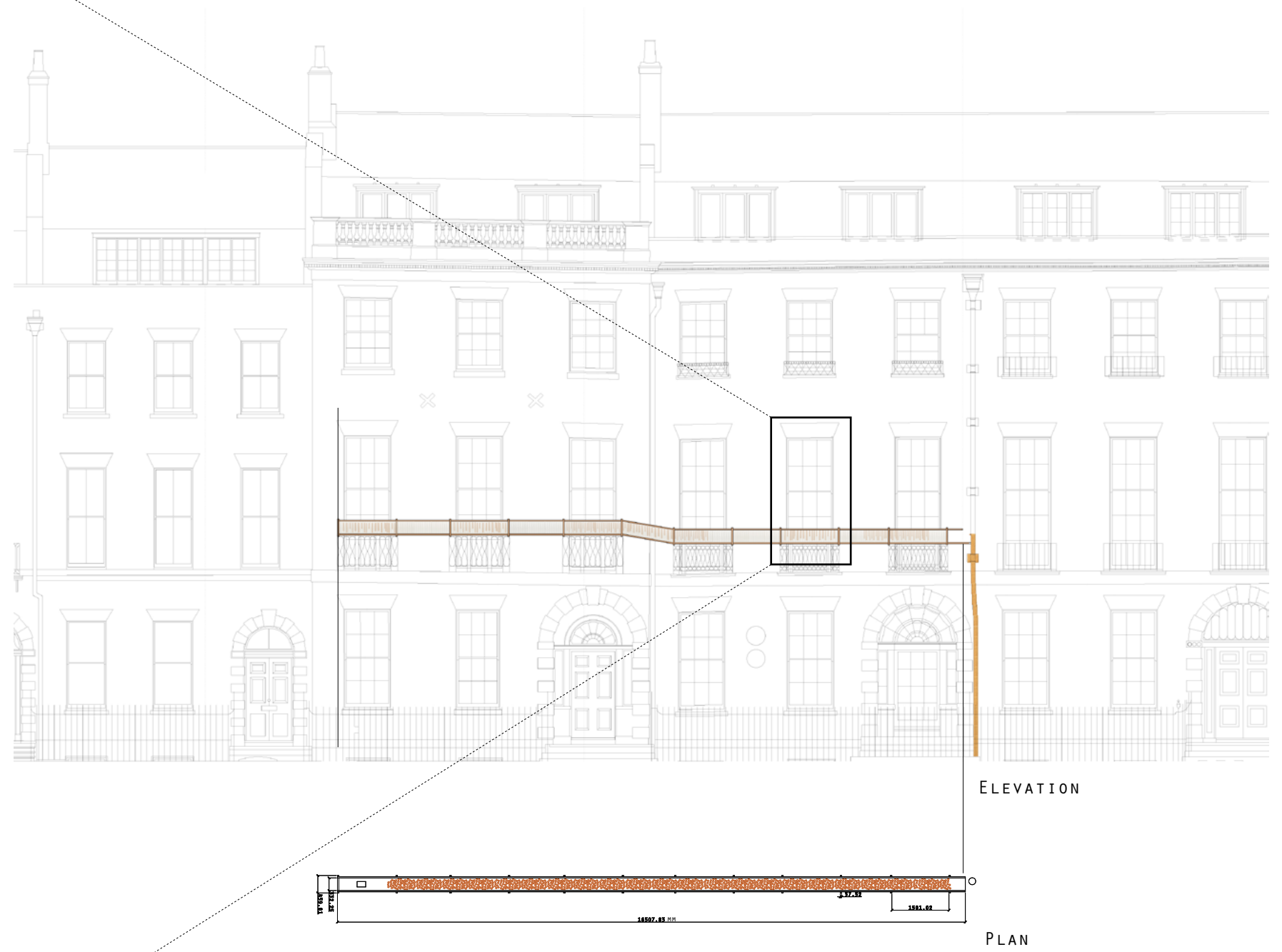


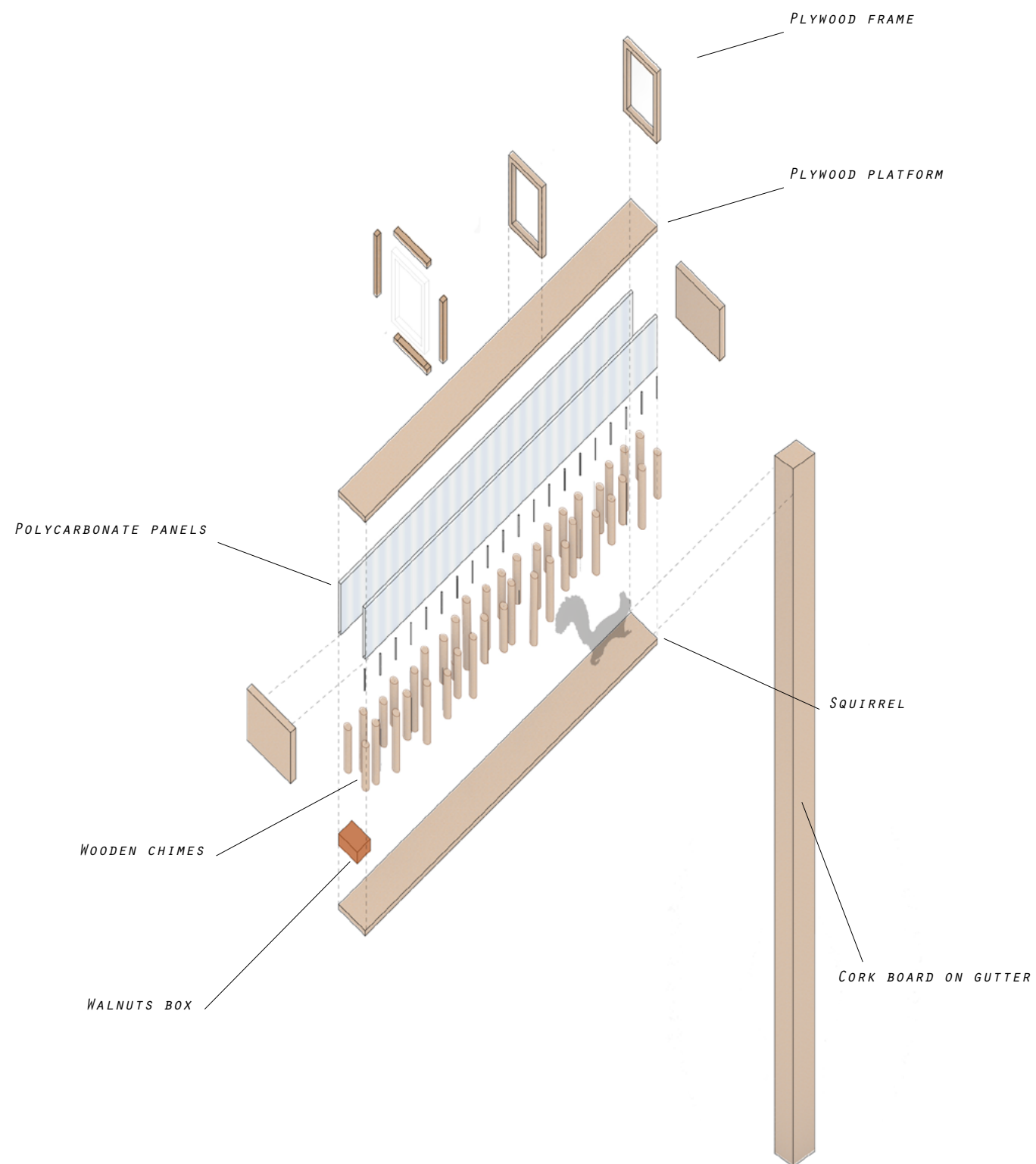
CLIMB THE NOTE

CLIMB THE NOTE, A SQUIRREL'S CREATIVE JOURNEY IN FRONT OF THE ARCHITECTURAL ASSOCIATION'S MAIN GATHERING SPACES. OUR PROJECT OFFER THE SQUIRRELS OF BEDFORD SQUARE A PART IN THE CREATIVE PROCESS OF THE SCHOOL THROUGH MUSIC. MADE OF WOOD AND SEMI-TRANSPARENT MATERIALS, THEIR MOVEMENT BECOMES NOT ONLY A CONCERT BUT ALSO A SHADOW SHOW. AS THE STUDENTS ARE CURRENTLY GONE, THE ANIMALS ARE THE ONLY ONES BRINGING LIFE BACK TO THE SCHOOL.

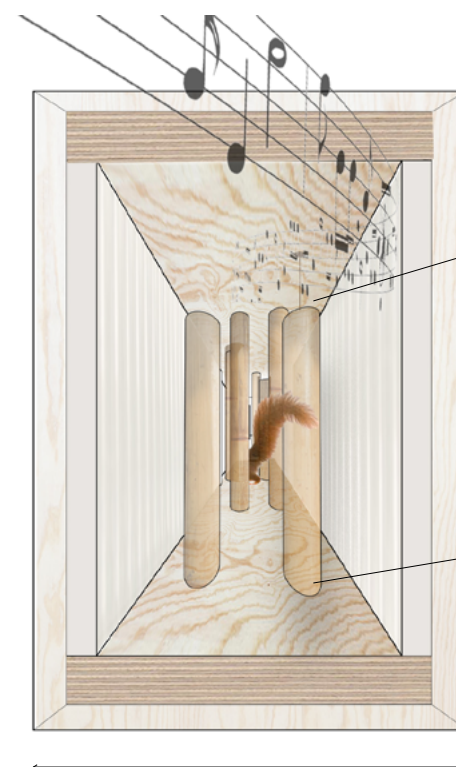
AS 35 BEDFORD SQUARE ISN'T ACCESSIBLE TO HUMANS, IT BECOMES A PERFECT ENTRY POINT FOR THE FURRY ANIMALS. BY SLIDING THROUGH WOODEN CHIMES THEY GENERATE MUSIC NOTES, CREATING A DIFFERENT COMPOSITION AT EACH PASSAGE. AT THE END OF THE TUNNEL IS THE ULTIMATE SQUIRRELS REWARD; THE NUT.

MATIS BAROLLIER
CAMILLE BONGARD
CESAR JUCKER





0.4 M



0.24 M

