

SILVER GALA
19 NOVEMBER 2019

AA

A&

Aカカ

A[˙]ア

A^oア

A^hア

A^oア

A^oア

A^oア

A^oア

A^oア

A^oア

Architecture in Translation

ARCHITECTURE IN
TRANSLATION



EXHIBITION AND
AUCTION CATALOGUE



FLAVIE AUDI

Dark Cloud 28 2016

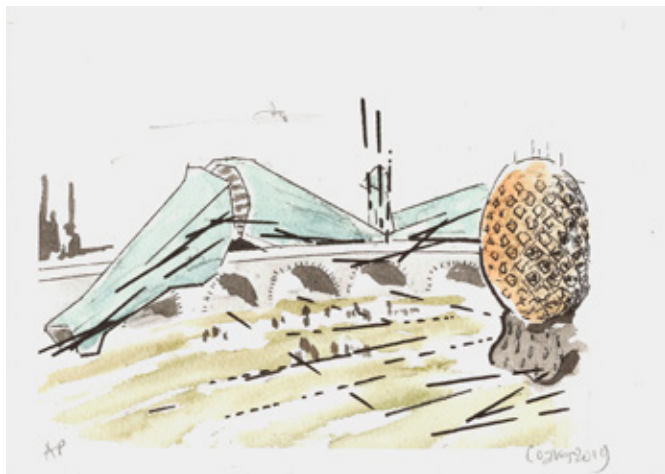
Blown glass, fine silver 16cm x 38cm x 33cm



TATIANA BILBAO

Torre Guatemala 2019

Collage Courtesy of Tatiana Bilbao Estudio 20cm x 23.5cm



NIGEL COATES

The David Night Park and Good Egg affordable housing 2017
Giclée ink on Saunders Waterford paper Courtesy of Nigel Coates
and Betts Project 20cm x 27cm



NIGEL COATES

The Willendford Venus 2017
Giclée ink on Saunders Waterford paper Courtesy of Nigel Coates and
Betts Project 20cm x 27cm



REVITAL COHEN & TUUR VAN BALEN

Paradise (glass) 2019

Cyanotype and gouache on paper 50cm × 70cm



DOUGLAS COUPLAND

Forest of Theoretical Sex Toys 2019

3d printed nylon, polylactic acid, resin and sandstone

Courtesy of Douglas Coupland and AA Digital Prototyping Lab, originally
made for Wallpaper* Handmade 2019 128cm × 52cm × 58cm



THOMAS HEATHERWICK

Spun Chair 2007

Rotational-moulded polyethylene Courtesy of Heatherwick Studio

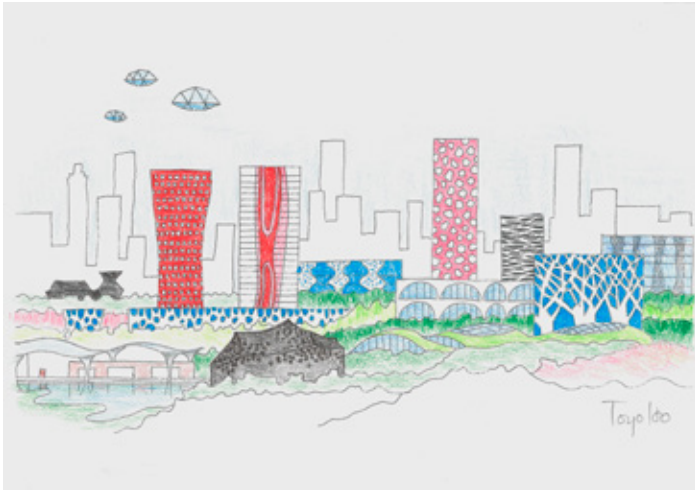
91cm x 91cm x 65cm



STEVEN HOLL

Untitled 2019

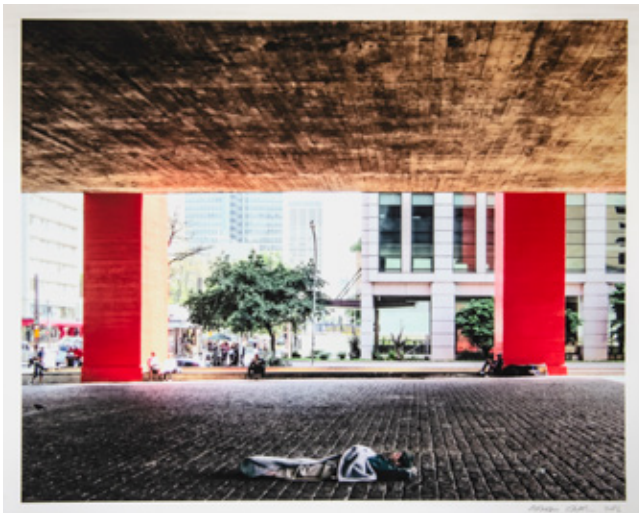
Watercolor on paper 20cm x 25cm



TOYO ITO

My Cosmos 2019

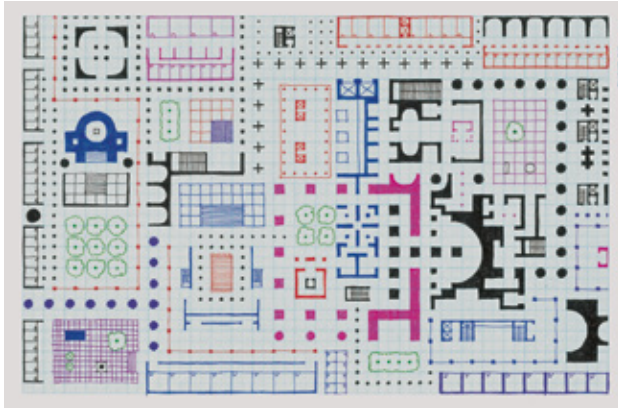
Paper 29.7cm × 42cm



ALFREDO JAAR

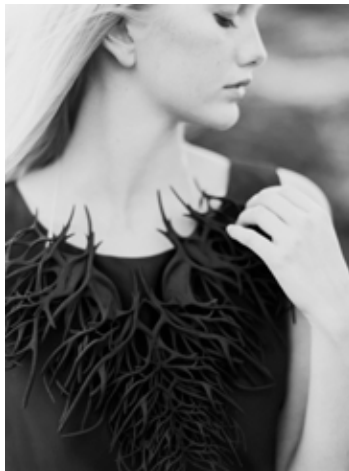
Brutalismo 2016

Pigment print mounted on museum board 38.1cm × 45.72cm



SAM JACOB

Empire of Ice Cream 2019
Ink on graph paper 21cm × 29.7cm



JULIA KOERNER

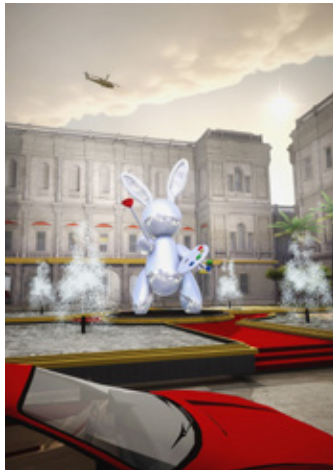
Kelp Necklace 2016
Edition 5 of 5 3D printed SLS Technology TPU / Silver Chain
Courtesy of Julia Koerner | JK Design 29.1cm × 32cm × 5.2cm



KENGO KUMA

Bamboo Ring: Weaving into Lightness 2019

A 1:3 scale model of 'Bamboo Ring: Weaving into Lightness' by Kengo Kuma, first commissioned by London Design Festival in partnership with OPPO for the V&A's John Madejski Garden, 14-22 September 2019, and curated by Clare Farrow. With further support by Komatsu Matere and ANA (All Nippon Airways). The model was made by the Kengo Kuma Laboratory, The University of Tokyo. 200cm × 200cm × 70cm



LAWRENCE LEK

Unreal Estate (The Royal Academy is Yours) 2015

Edition 1 of 6 + 2 AP Fuji Flex C-Type Print Courtesy of the artist and Sadie Coles HQ, London 84cm × 59.4cm



THOM MAYNE

Composite 001: Yellow 2015 Edition 13 of 20
Lithograph, Silkscreen, Silver on Paper 63.5cm × 47.5cm



FARSHID MOUSSAVI

Simone 2018
Print on paper 53.4cm × 40.8cm



TOM SACHS

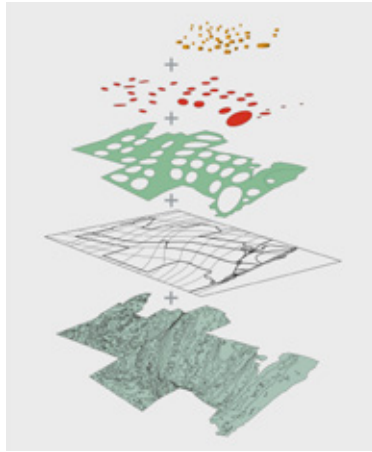
Chawan Lesson: a 1-on-1 in-person experience
with Tom Sachs in his NYC studio



FREDRIKSON STALLARD

Rock #4 2016

Polyurethane, Pigment, Steel 43cm x 27cm x 19cm



BERNARD TSCHUMI

Exploded Axonometric, Elliptic City IFCA, Santo

Domingo 2005/2014 Edition 5 of 5 Pigment Print, Greenberg Editions
107cm x 76cm



ROGER ZOGOLOVITCH

Dancers 2018

Lino print printed using the Albion Press on Zerkall paper 30cm x 37cm

Proceeds from the Silver Gala support the Public Programme and Publications of the AA. By attending this evening or by bidding on an auction item, you are helping us to keep our lectures, symposia and exhibitions free and open to everyone. Thank you.

If you are interested in other forms of support, we invite you to contact us for more information regarding the opportunities available to support students and education at the AA, both in London and around the world. Please contact development@aa-school.ac.uk

Architectural Association
36 Bedford Square, London WC1B 3ES
T +44 (0)20 7887 4000
www.aaschool.ac.uk

Architectural Association (Inc). Registered Charity No 311083,
Company Limited by Guarantee. Registered in England No 171402.
Registered Office as above.

