

Architectural Association
School of Architecture

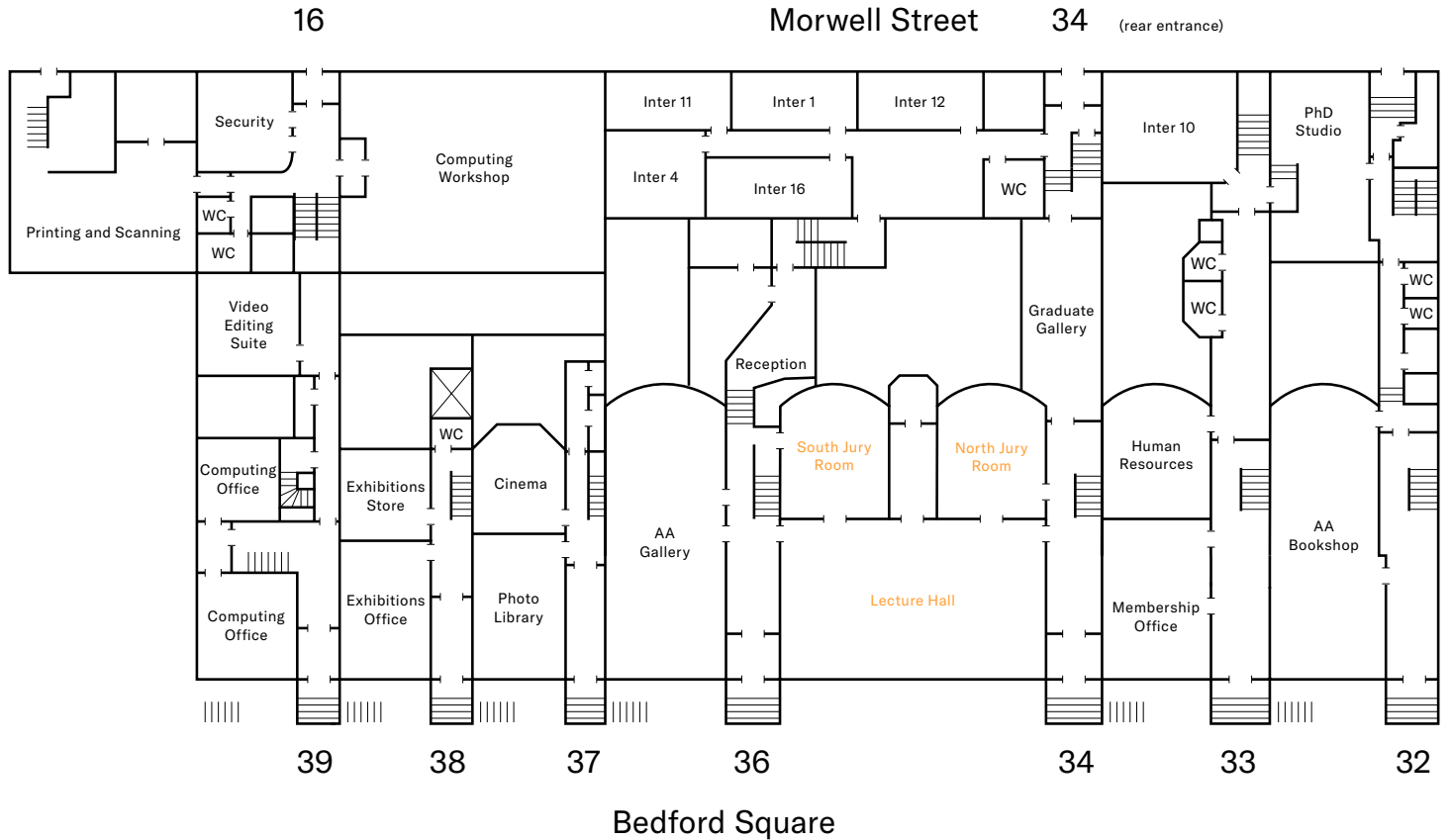
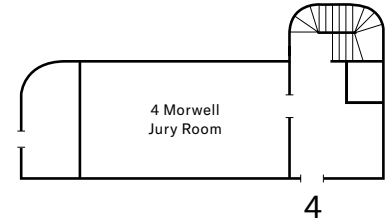
2016–17

FLOOR

PLANS

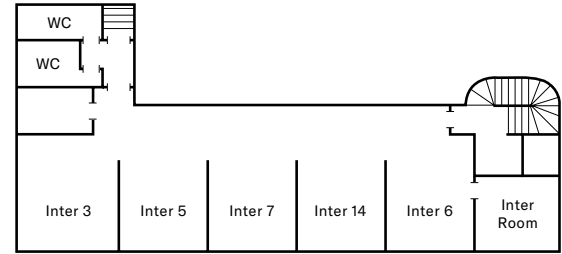
Ground Floor

Indicates a bookable space (see back page for contact details)



First Floor

Indicates a bookable space (see back page for contact details)

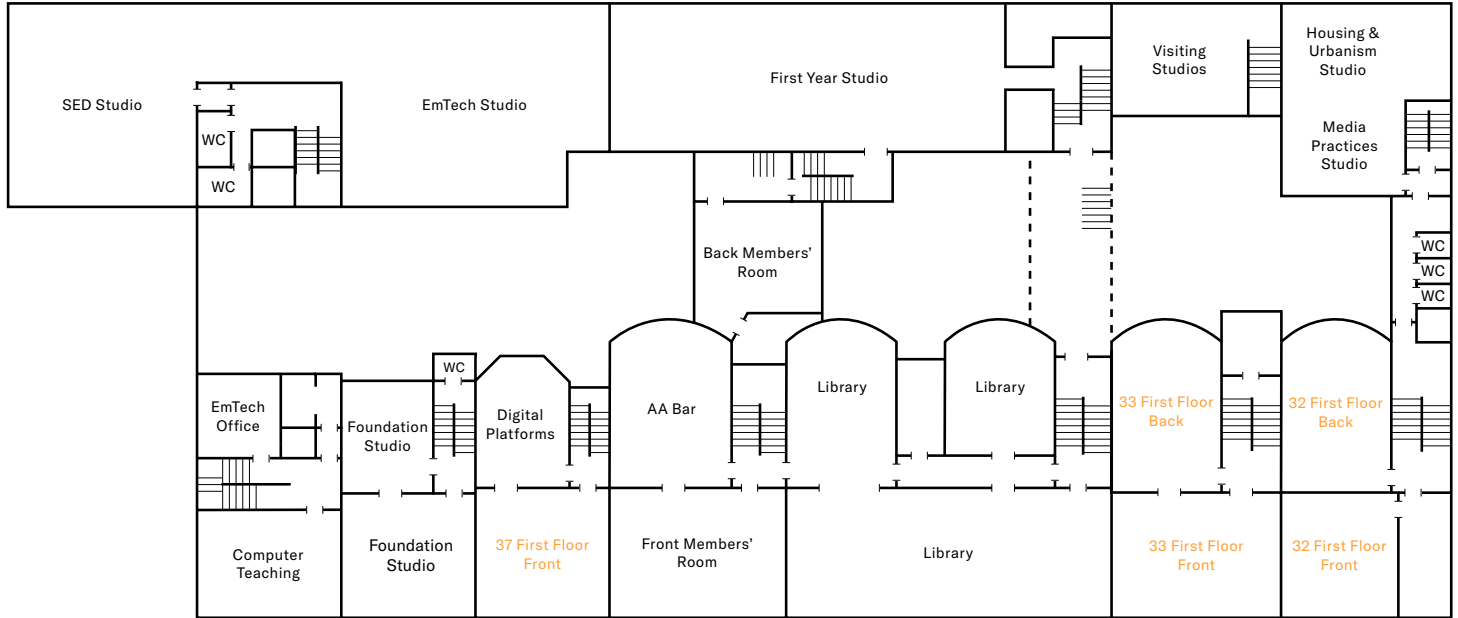


4

16

Morwell Street

34



39

38

37

36

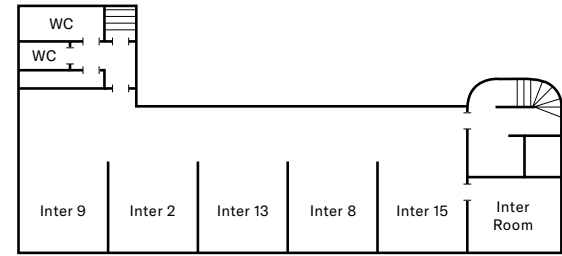
34

33

32

Bedford Square

Second Floor

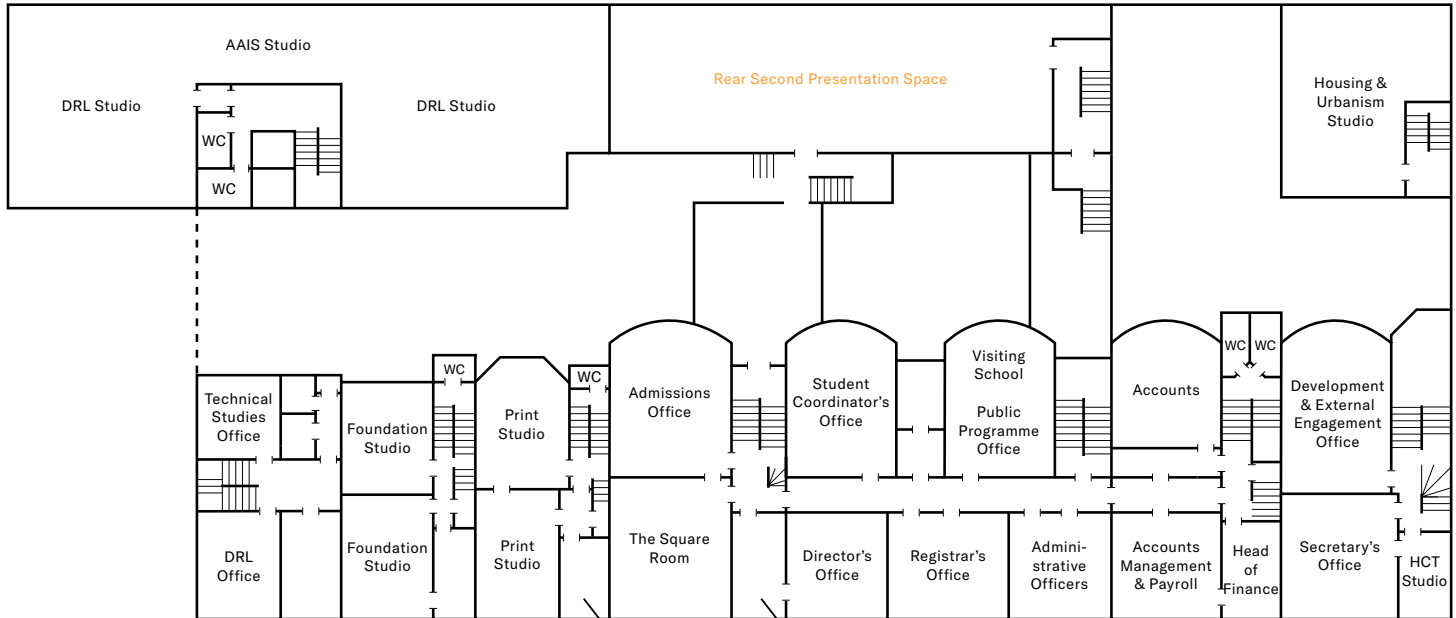


4

16

Morwell Street

34



AA Publications
Director's Assistant

39

38

37

36

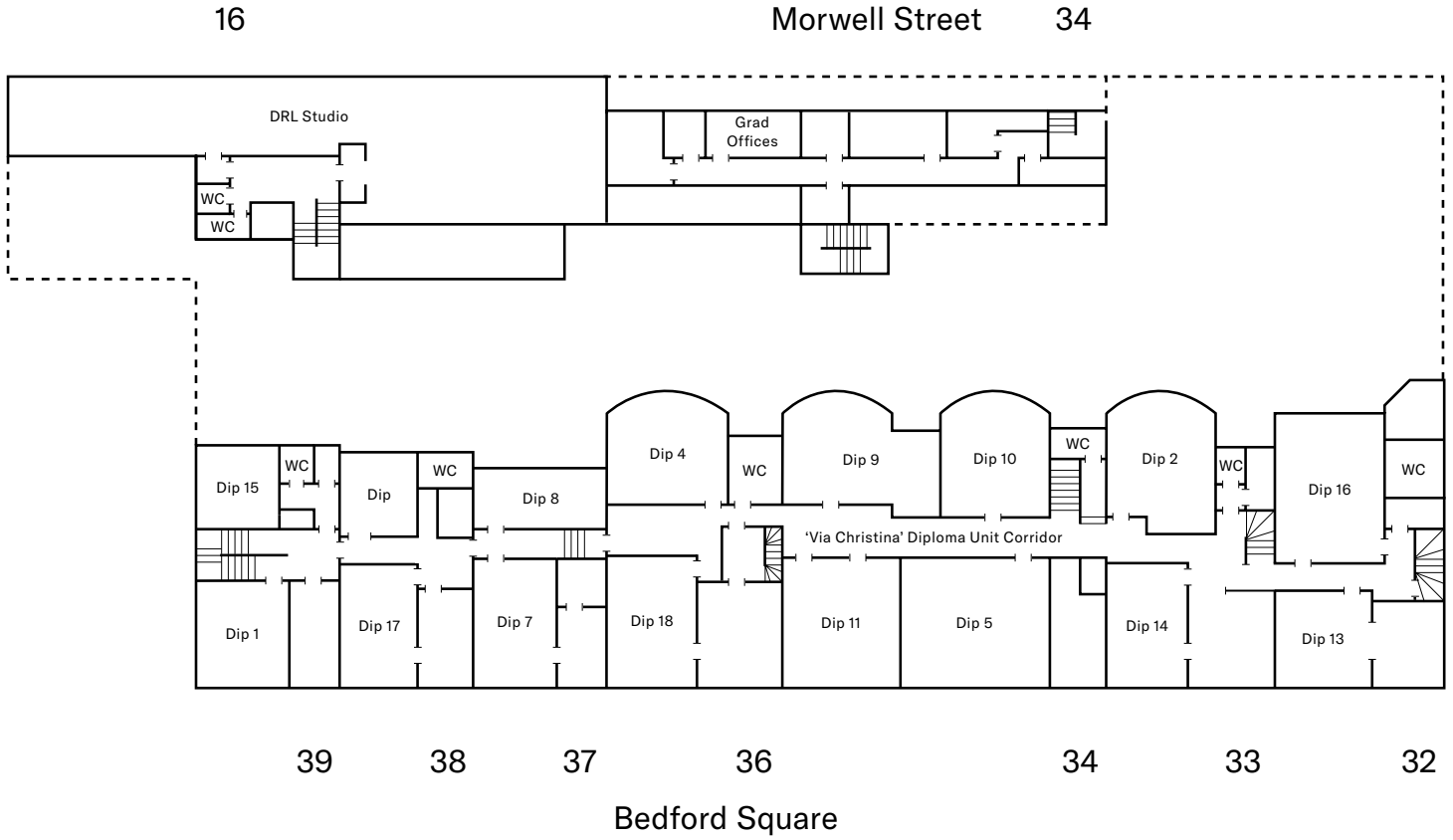
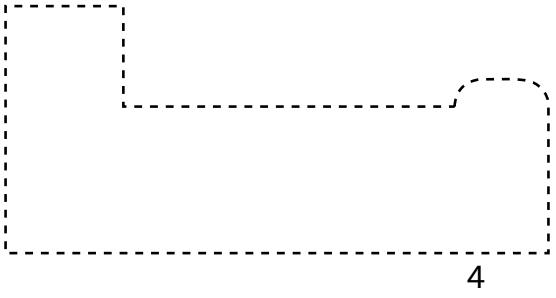
34

33

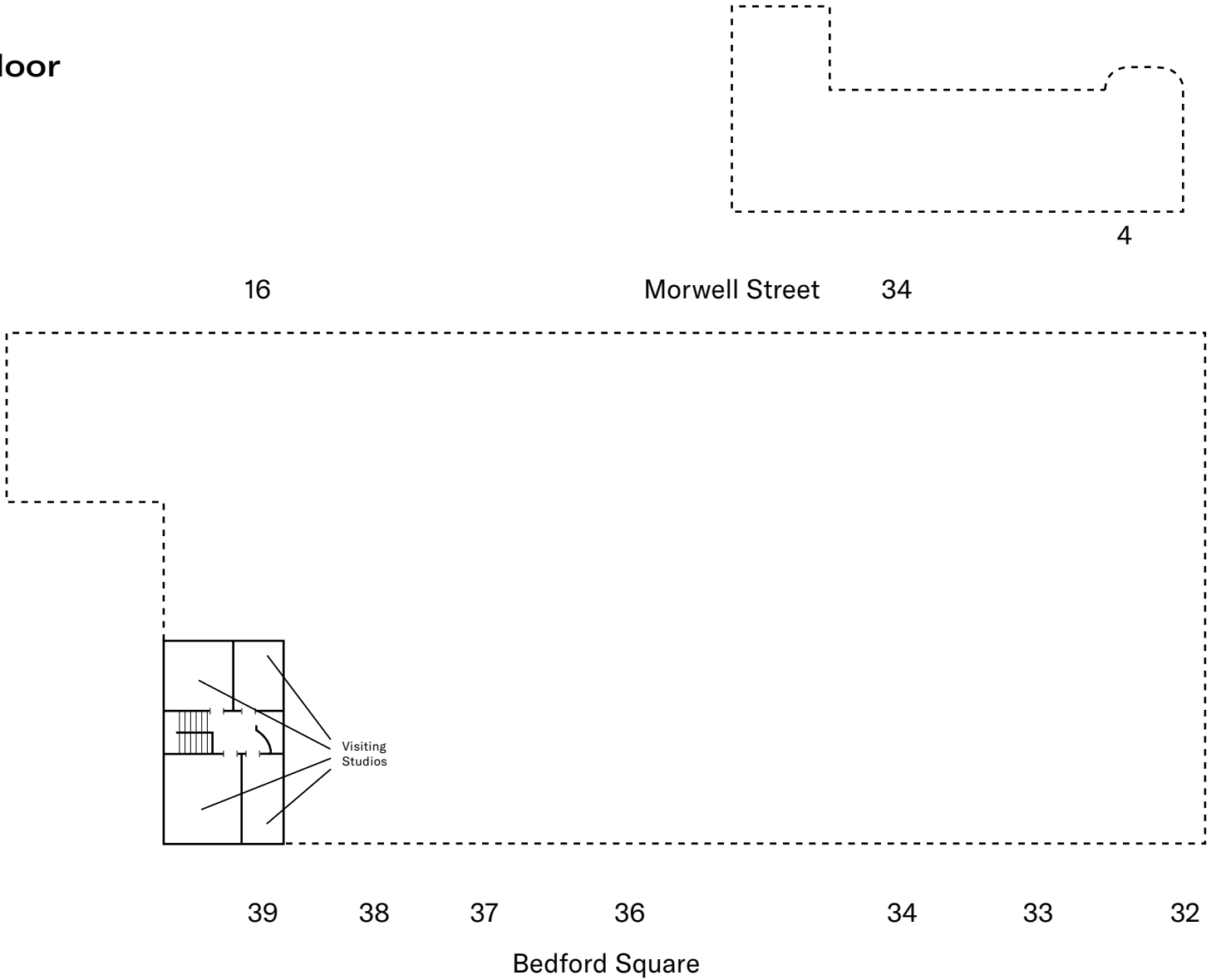
32

Bedford Square

Third Floor



Fourth Floor



To book spaces please contact:

Undergraduate units, Foundation and Public Programme bookings
rachel.sim@aaschool.ac.uk

Complementary courses
claire.hudspeth@aaschool.ac.uk

Graduate School bookings
clement@aaschool.ac.uk and
nina.el-touny@aaschool.ac.uk

Computer Workshop bookings
Julia Frazer
julia@aaschool.ac.uk

This document is also available online
www.aaschool.ac.uk/plans

Architectural Association, 36 Bedford Square, London WC1B 3ES
T +44 (0)20 7887 4000 F +44 (0)20 7414 0782

Architectural Association (Inc), Registered charity No 311083
Company limited by guarantee. Registered in England No 171402
Registered office as above AA Members wishing to request
a large-print version of specific printed items can do so by
contacting AA Reception: +44 020 7887 4000
reception@aaschool.ac.uk or by accessing the AA website
at www.aaschool.ac.uk

